

Protective Cover for Operator Display

Dear customer,

The protection of important components of your ROVEMA packaging machine contributes to a long-term conservation of value and a constant functionality. We would like to support you in this regard with the retrofit of a protective cover for the operator display.

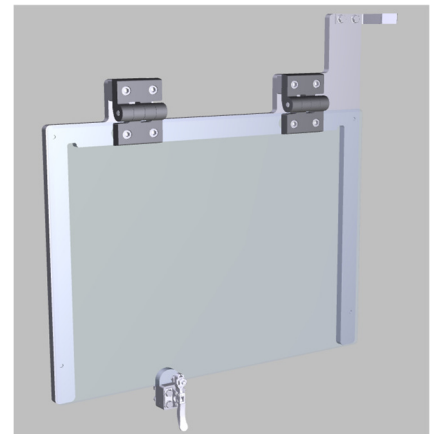
The cover is suitable for all operator displays with a monitor, either mounted on a swivel arm or integrated into the control cabinet. It protects the surface of the display against accidental shocks during production as well as the direct water jet in case of a wet cleaning of the machine. Thus, the displays usually waterproof according to IP65 receive additional protection. Moreover, the risk of an unplanned machine stop is reduced.

The protective cover for the operator display offers you:

- protection against direct water jet and shocks
- secured functionality of the machine
- reduction of risk of unplanned production loss
- preventive protection for high-quality electronic components

The retrofit kit contains:

- transparent cover plate
- frame with hinges and locking mechanism (if required)
- mounting material incl. adapter device for displays at swivel arm



protective cover (example)



operator display with protective cover

The protective cover can be retrofitted on all ROVEMA machines with an operator display with monitor.

For more information about the protective cover for the operator display or in case of questions regarding your ROVEMA packaging machine, your contact persons at ROVEMA Service are always at your disposal.

Your ROVEMA Service Team